



# TRX and T-BIRD

*Vinyl Railing*





## DSI ADVANTAGES

1

PolyRail® TRX Vinyl Railing has passed IBC code requirements. CCRR-0147

---

2

4-Way Adjustable Aluminum Post Mount

---

3

PolyRail® T-Bird Vinyl Railing features a distinct T-shaped top rail creating a "Drink Rail".



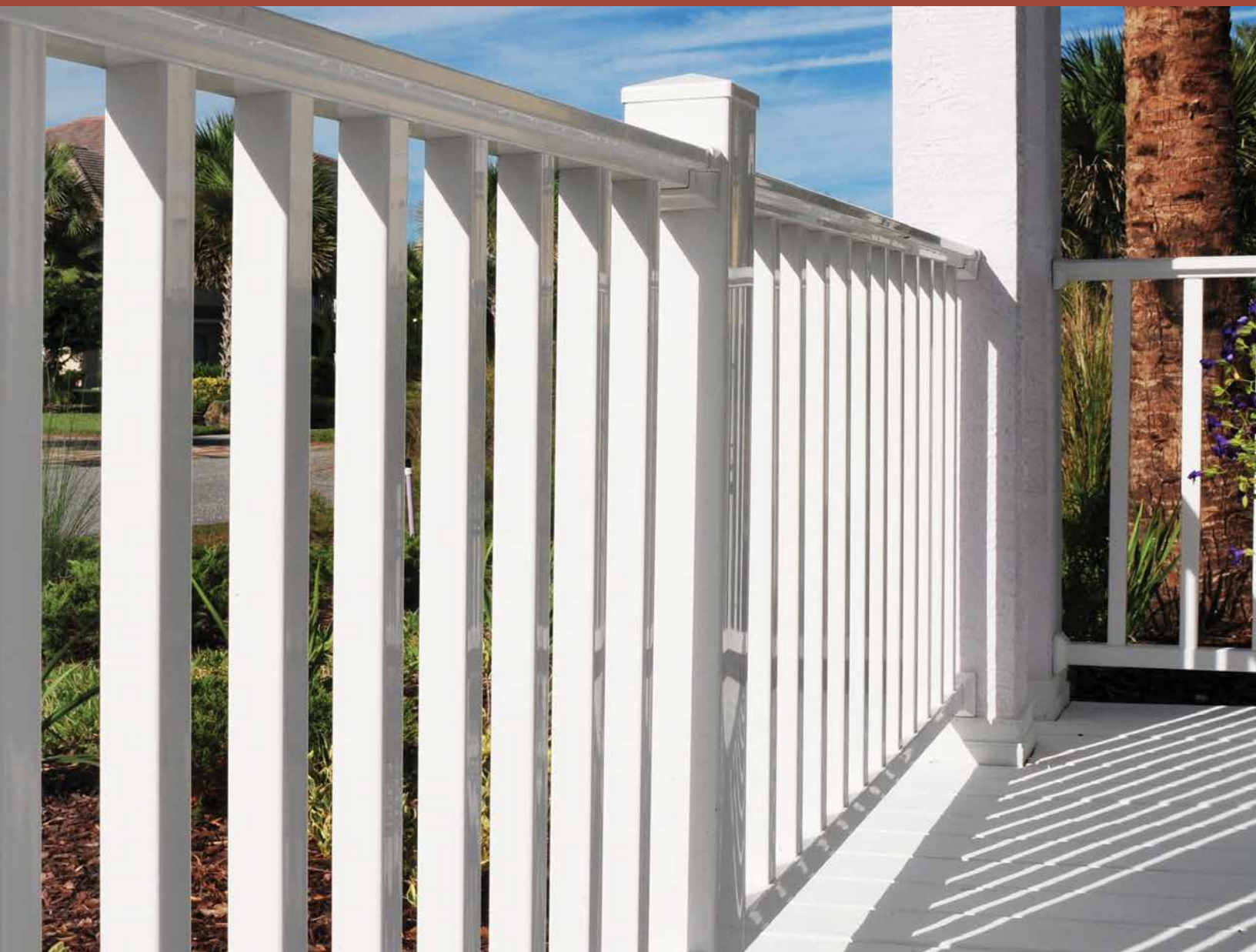
## TABLE OF CONTENTS

TRX Vinyl Railing .....	2-5
T-Bird Vinyl Railing .....	6-9
Standard Vinyl Posts and Post Mounts .....	10-11
“A” Series Decorative Vinyl Posts .....	12
Column Clad Vinyl Post Wraps .....	13
“B” Series Aluminum Posts .....	14
Continuous Handrail .....	15
Colors and Powder Coating .....	16-17





# TRX VINYL RAILING



# TRX RAILING



## STANDARD BALUSTER

1-3/8" x 1-3/8" Square Vinyl  
3-7/8" Baluster Spacing

White Tan Mocha



## "A" SERIES BALUSTER

1-3/8" x 1-3/8" Decorative Vinyl  
3-7/8" Baluster Spacing  
42" Balusters are Aluminum Reinforced

White Tan



## "B" SERIES BALUSTER

3/4" Round Aluminum  
3-7/8" Baluster Spacing  
See Page 16 for Baluster Colors

White Tan Mocha

For code compliance information visit [diggerspecialties.com](http://diggerspecialties.com) for details on lengths and balusters covered by testing report CCRR-0147.

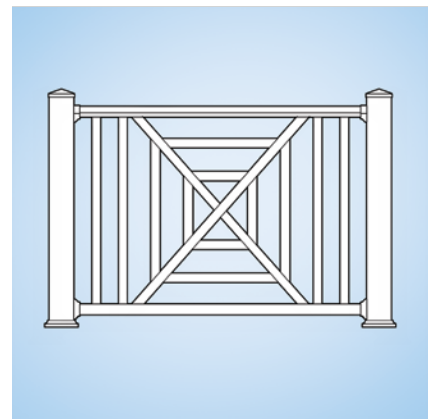
Section Type	Length										Height		Baluster Style		
	4'	5'	6'	7'	8'	9'	10'	12'	14'	16'	36"	42"	Std	A	B
Straight	•	•	•	•	•	•	•				•	•	•	•	•
Stair	•	•	•	•	•	•	•				•	•	•	•	•
Crossover - Straight								•	•	•	•	•	•	•	•
Crossover - Stair											Not Available		Not Available		
Single Chippendale - Straight	•	•	•	•	•	•	•				•	•	•		
Double Chippendale - Straight					•	•	•				•	•	•		
Chippendale - Stair											Not Available		Not Available		
Single Caribbean - Straight	•	•	•	•	•	•	•				•		•		
Double Caribbean - Straight					•	•	•				•		•		
Caribbean - Stair											Not Available		Not Available		



**CROSSOVER**



**SINGLE CHIPPENDALE**



**SINGLE CARIBBEAN**

Note: Railing Support included with all 5' - 10' sections. Crossover Sections (10' - 16') include two Railing Supports.



# TRX MOUNTS & ACCESSORIES

## HIDDEN SCREW RAIL MOUNTS

### STANDARD WALL MOUNTS:

1-4 pack is included inside each boxed railing section.

A 4 pack contains (2) top mounts, (2) bottom mounts, and screws.



Top Rail Mount



Bottom Rail Mount

### STANDARD STAIR MOUNTS:

1-4 pack is included inside each boxed stair railing section.

A 4 pack contains (2) top mounts, (2) bottom mounts, and screws.



Top Stair Mount  
(factory pre-cut)



Bottom Stair/  
Angle Mount

### OPTIONAL SPECIALTY MOUNTS:

These mounts are not included with boxed sections.

A 4 pack contains (2) top mounts, (2) bottom mounts, and screws.



Top Stair/  
Angle Mount (uncut)



Bottom Stair/  
Angle Mount



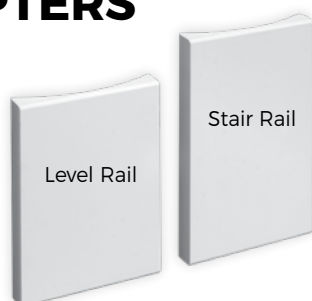
Top 45° Mount  
(factory pre-cut)



Bottom 45° Mount  
(factory pre-cut)

For Stair Racking information visit [polyrail.com](http://polyrail.com)

## 8" AND 10" ROUND COLUMN ADAPTERS



Not Available in 6"

## RAIL SUPPORTS

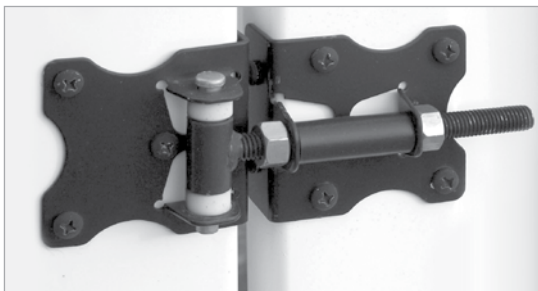


# TRX GATES & HARDWARE

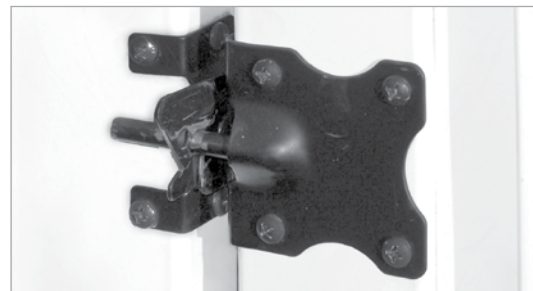


Baluster Style	Gate Size (width x height)			
	36" x 36"	48" x 36"	36" x 42"	48" x 42"
Standard Baluster	•	•	•	•
"A" Series Baluster	•	•	•	•
"B" Series Baluster	•	•	•	•

## RESIDENTIAL HINGE



## RESIDENTIAL LATCH



White

Tan

Mocha

Black



# T-BIRD VINYL RAILING





# T-BIRD RAILING



## STANDARD BALUSTER

1-3/8" x 1-3/8" Square Vinyl  
3-1/2" Baluster Spacing

White

Tan

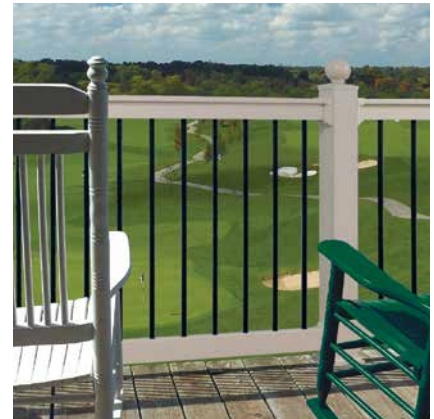


## "A" SERIES BALUSTER

1-3/8" x 1-3/8" Decorative Vinyl  
3-1/2" Baluster Spacing  
42" Balusters are Aluminum Reinforced

White

Tan



## "B" SERIES BALUSTER

3/4" Round Aluminum  
3-7/8" Baluster Spacing  
See Page 16 for Baluster Colors

White

Tan

Section Type	Length										Height		Baluster Style		
	4'	5'	6'	7'	8'	9'	10'	12'	14'	16'	36"	42"	Std	A	B
Straight	•	•	•	•	•	•	•				•	•	•	•	•
Stair	•	•	•	•	•	•	•				•	•	•	•	•
Crossover - Straight								•	•	•	•	•	•	•	•
Crossover - Stair					Not Available						Not Available		Not Available		
Single Chippendale - Straight	•	•	•	•	•	•	•				•	•	•		
Double Chippendale - Straight				•	•	•	•				•	•	•		
Chippendale - Stair					Not Available						Not Available		Not Available		



**CROSSOVER**



**DOUBLE CHIPPENDALE**

Note: Railing Support included with all 8' - 10' sections. 16' Crossover Sections include two Railing Supports.

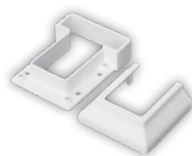
# T-BIRD MOUNTS & ACCESSORIES

## HIDDEN SCREW RAIL MOUNTS

### STANDARD WALL MOUNTS:

1-4 pack is included inside each boxed railing section.

A 4 pack contains (2) top mounts, (2) bottom mounts, and screws.



Top Rail Mount



Bottom Rail Mount

### STANDARD STAIR MOUNTS:

1-4 pack is included inside each boxed stair railing section.

A 4 pack contains (2) top mounts, (2) bottom mounts, and screws.



Top Stair Mount

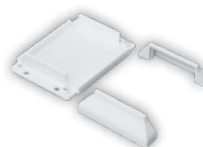


Bottom Stair Mount

### OPTIONAL SPECIALTY MOUNTS:

These mounts are not included with boxed sections.

A 4 pack contains (2) top mounts, (2) bottom mounts, and screws.



Top/Bottom Angle Mount



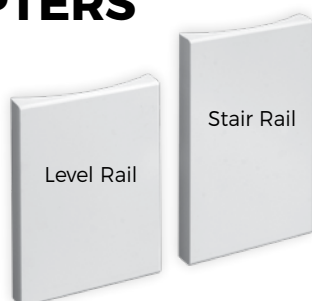
Top 45° Mount



Bottom 45° Mount

For Stair Racking information visit [polyrail.com](http://polyrail.com)

## 8" AND 10" ROUND COLUMN ADAPTERS



Not Available in 6"

## RAIL SUPPORTS

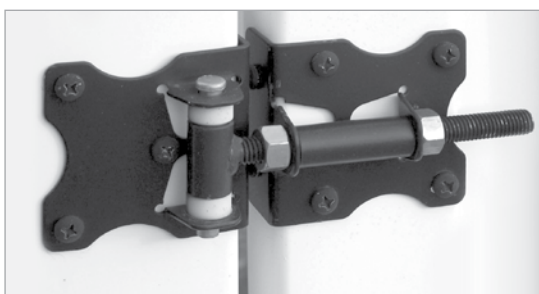


# T-BIRD GATES & HARDWARE

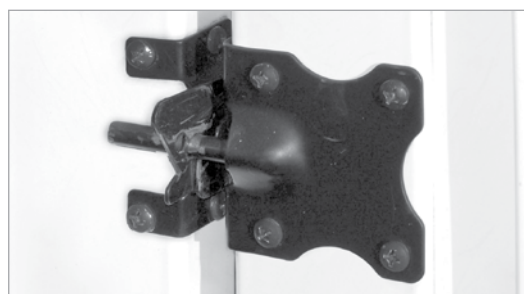


Baluster Style	Gate Size (width x height)			
	36" x 36"	48" x 36"	36" x 42"	48" x 42"
Standard Baluster	•	•	•	•
"A" Series Baluster	•	•	•	•
"B" Series Baluster	•	•	•	•

## RESIDENTIAL HINGE



## RESIDENTIAL LATCH



White

Tan

Black



# STANDARD VINYL POSTS

## VINYL POSTS

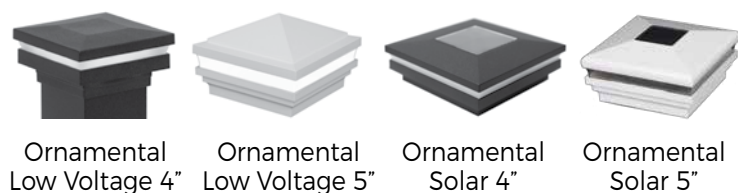


## VINYL POST CAPS

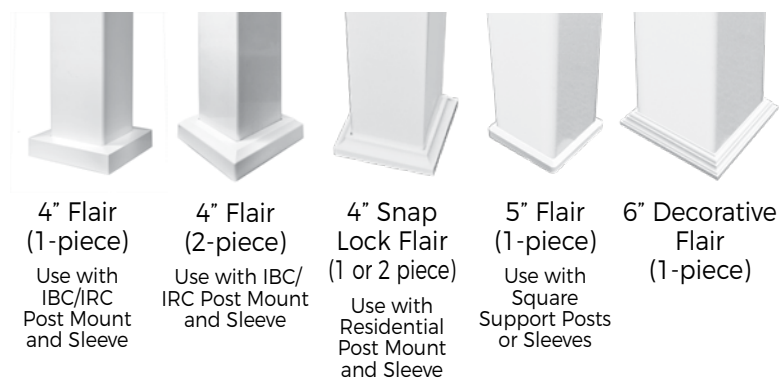


## MAGENA STAR

Magenta Star Ornamental Low Voltage and Solar Lights. Visit [magenastar.com](http://magenastar.com) for more information and to see additional styles.



## VINYL POST FLAIRS



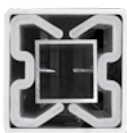
## VINYL POSTS SPECIFICATIONS

	4" Post Sleeve	5" Post Sleeve	5" Support Post	6" Post Sleeve
Heights	38", 44", 48", 54" 8', 9', 10'	38", 44", 48", 54" 8', 9', 10'	8', 9', 10'	38", 44", 48", 54" 10'
Load Capacity	Non-Load Bearing w/o Wood Post	Non-Load Bearing w/o Wood Post	8' = 12,000 lb.	Non-Load Bearing w/o Wood Post

# POST MOUNTS & KITS

## 4" RESIDENTIAL ADJUSTABLE ALUMINUM POST MOUNTS

Requires 4" (.160" Wall)  
Post Sleeve.



Top View

Powder coated base plates  
resist corrosion and ACQ  
wood treatment.

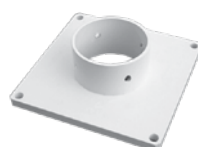


Angle Adjustment  
Leveling Bolts

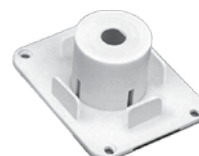


Heavy-Duty    Standard

## TOP AND BOTTOM POST MOUNTS



5" Top & Bottom  
Hurricane Mount  
Set (Included  
with all 5" Square  
Support Posts)



Optional  
4" Top and  
Bottom Post  
Mount Plates



## TRX BOXED POST KIT

### 5 Options Available:

1. Without Aluminum Post Mount
2. With IRC Post Mount
3. With IBC Post Mount
4. With Residential Heavy Duty Post Mount
5. With Residential Standard Post Mount

### Includes:

- 4" x 4" Vinyl Post
- Post Mount (optional)
- Flat or Trim Cap
- Post Flair

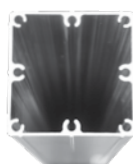
## 4" IBC AND IRC POST MOUNTS

### IBC (HEAVY DUTY) POST MOUNTS:

- IBC Approved
- 3.62" Tube
- .060" Wall
- ½" x 5½" square plate with 8 fasteners
- Shims and leveling bolts included



Top View



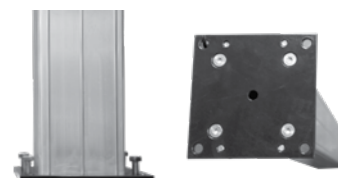
43" IBC  
Post Mount  
Available in  
37", 43", 47"  
& 53" lengths



37" IRC  
Post Mount  
Available in  
37", 43", 47"  
& 53" lengths

### IRC (STANDARD) POST MOUNTS:

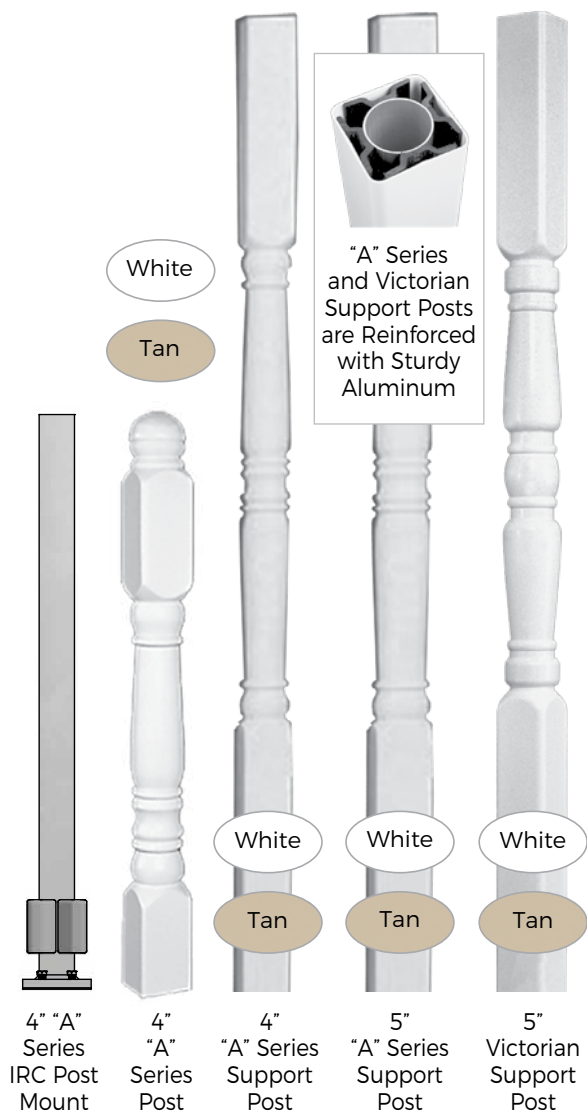
- IRC Approved
- 3.62" Tube
- .060" Wall
- ¼" x 5½" square plate with 4 fasteners
- Shims and leveling bolts included



Requires 4" (.135" Wall) Post Sleeve  
Note: 5" and 6" Post Mounts available.  
Contact Customer Service for information.

# "A" SERIES DECORATIVE VINYL POSTS

## POSTS



## CAP



"A" Series Decorative Post Caps are Easily Attached with Vinyl Adhesive

Cap is Included with Post

## FLAIRS



4" Flair  
(1-piece)

Use with  
IBC/IRC Post  
Mount



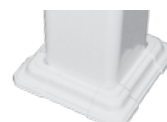
4" Flair  
(2-piece)

Use with  
IBC/IRC Post  
Mount



4" Snap  
Lock Flair  
(1 or 2 piece)

Use with  
Residential Post  
Mount



5" Decorative  
Flair

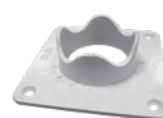
Use with  
Decorative  
Support Posts

## SUPPORT POST MOUNTS



4" Top & Bottom  
Post Mount Plates

(Included with  
all 4" "A" Series  
Support Posts)



5" Top & Bottom  
Post Mount Plate Set

(Included with all  
5" Decorative Support  
Posts)



Optional 5" Top &  
Bottom Hurricane  
Mount Sets are  
Tested for High  
Wind Loads for 5"  
"A" Series Post

## POSTS SPECIFICATIONS

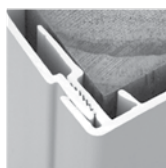
	4" "A" Series Post	4" "A" Series Support Post	5" "A" Series Support Post	5" Victorian Support Post
Heights	38", 44", 48", 52"	9'	9', 10'	9'
Load Capacity	Non-Load Bearing w/o Aluminum Post Mount	3,900 lb.	9' = 7,520 lb.	9' = 7,520 lb.



# COLUMN CLAD VINYL POST WRAPS

## STYLES

The Wood Post Supplies Load Capacity



Ratchets to  
Lock Together



Wraps Around  
the Wood Post –  
No Screws Needed



Smooth



Fluted  
(Special Order)

## CAP



Column Clad Cap  
4", 6"

## FLAIR



Column Clad Flair (4-piece)  
4", 6", 8"

## SPECIFICATIONS

	4" Smooth Column Clad	6" Smooth Column Clad	4" Fluted Column Clad	6" Fluted Column Clad	8" Fluted Column Clad
Heights	8'6", 10'	8'6", 10'	8'6", 10' (Special Order)	8'6", 10' (Special Order)	10' (Special Order)
Load Capacity	Non-Load Bearing w/o Wood Post	Non-Load Bearing w/o Wood Post	Non-Load Bearing w/o Wood Post	Non-Load Bearing w/o Wood Post	Non-Load Bearing w/o Wood Post

# "B" SERIES ALUMINUM POSTS

See Page 16 for Color Options

## POSTS



4" Post Sleeve  
(.065" wall)

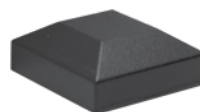
4" Post w/Plate  
(.090" wall)

6" Post w/Plate  
(.090" wall)

4" Support Post  
(.090" wall)

6" Support Post  
(.090" wall)

## CAPS

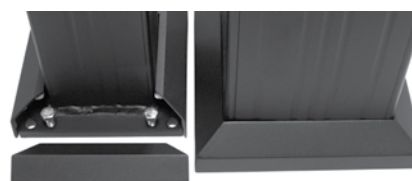


Flat Cap  
4" & 6"



Ball Cap  
4"

## FLAIR



Post Flair (2-piece)  
4" & 6"

## TIE DOWN BRACKET



Tie Down Bracket  
with Cover  
(Set of 2)

Installation  
Instructions  
Require 2 Sets  
per Support Post

## "B" SERIES POSTS SPECIFICATIONS

	4" "B" Series Post Sleeve	4" "B" Series Post w/Plate	6" "B" Series Post w/Plate	4" "B" Series Support Post	6" "B" Series Support Post
Heights	38", 44", 48", 54"	38", 44", 48", 54"	38", 44", 48", 54"	8', 9', 10'	8', 9', 10'
Actual ASD Load Bearing Capacity	Non-Load Bearing w/o Wood Post	Non-Load Bearing	Non-Load Bearing	8' = 13,531 lb. 9' = 12,751 lb. 10' = 11,970 lb.	8' = 16,543 lb. 9' = 16,543 lb. 10' = 16,543 lb.

# CHR

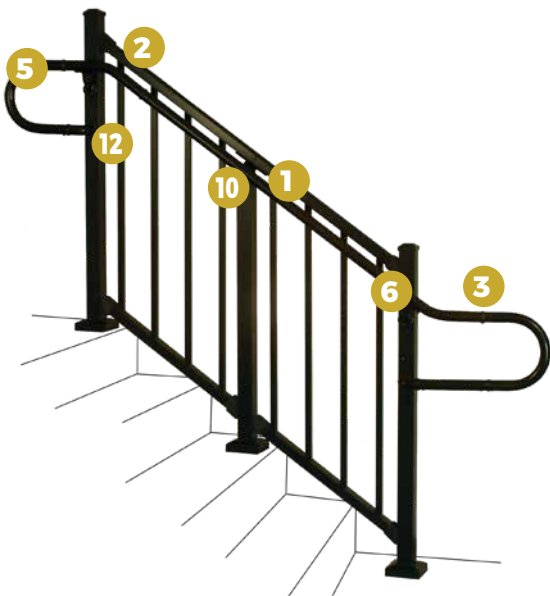
## Continuous Handrail ALUMINUM

### ADA COMPLIANT HANDRAIL

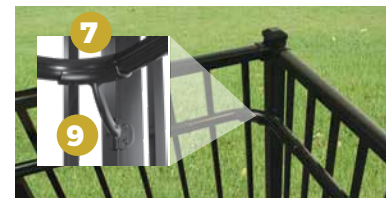
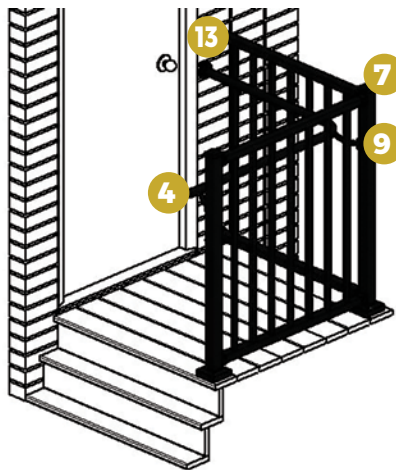
A variety of rail lengths and accessories complete this system.  
Available in 8', 10', & 16' Rail Lengths.  
Available in all the colors shown on page 16.



### STAIR APPLICATION



### DECK APPLICATION



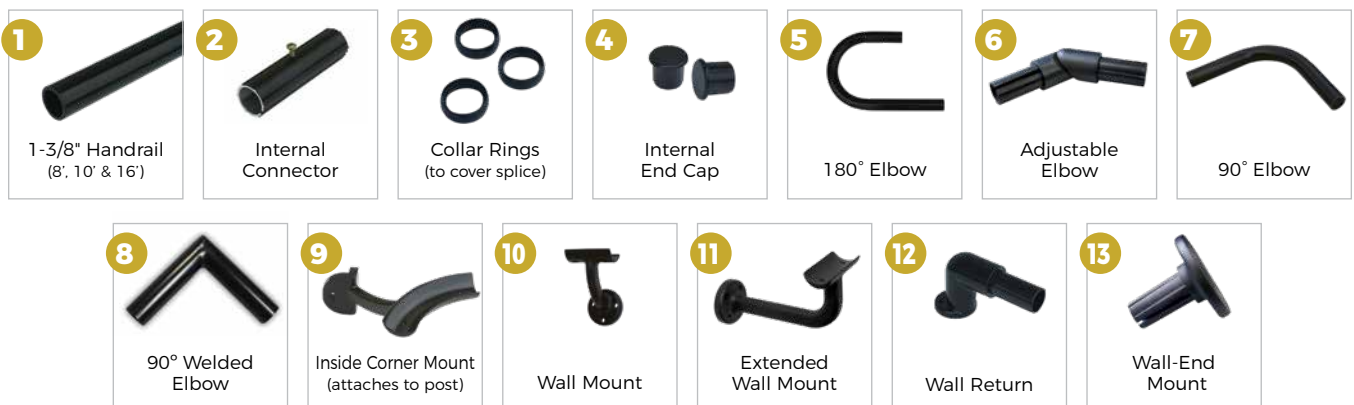
Inside Corner Mount  
& 90° Elbow Detail



Extended Wall Mount Detail



90° Welded Elbow Detail





# VINYL AND ALUMINUM COLORS

## VINYL COLORS

DSI Vinyl Products are available in three colors. Our Mocha color is available for **select** products, please see individual product pages for availability.



White



Tan



Mocha

## ALUMINUM COLORS

DSI Aluminum Products are offered in 12 standard AAMA 2604 colors. Custom colors and AAMA 2605 colors are available by special order.

Colors shown are a close representation of the true color.

Please consult actual samples for accurate powder coating colors.



Satin Black



Black Fine Texture



Ninety Bronze



Bronze Fine Texture



Gloss Beige



Gloss White



White Fine Texture



Brown Fine Texture



Speckled Walnut



Sandy Shore



Chocolate



Silver

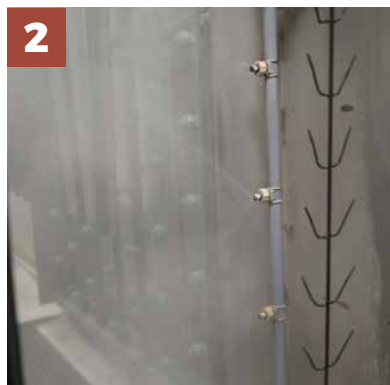
# POWDER COATING PROCESS

## EXCLUSIVE DSI POWDER COATING PROCESS

DSI's aluminum Powder Coating offers an uncompromising quality created by state-of-the-art technology. Our system provides the highest quality powder coating on the market with a lifetime limited warranty giving you peace of mind in your investment.



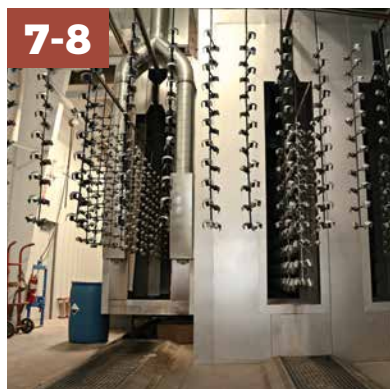
**1** The raw premium-grade aluminum is inspected to be free of blemishes and is not exposed to the outdoor elements.



**2** The product enters a heated acidic cleaning stage to remove extrusion debris and fabrication oils.



**3-6** **Clean:** City water rinse.  
**Cleaner:** Recycling reverse osmosis water rinse  
**Cleanest:** Pure reverse osmosis water rinse  
**Sealer:** Dried-in-place aluminum sealer



**7-8** A 200 MPH air blast removes water drops from the pre-treated aluminum. A convection oven completes the dry-off process.



**9** Powder is applied with 18 automated and 2 manual spray guns. Compressed process air is dried to -35°F Dew Point for superior adhesion.



**10** The powder coating is then bonded and adhered to the aluminum substrate in a 400 degree cure stage.



# DSI FAMILY OF PRODUCTS



polyrail.com



**ALTEK ALUMINUM, LLC**

WHOLESALE  
ALUMINUM PRODUCTS

211 Omohundro Place • Nashville, TN 37210

(615) 242-9123

altekcarports@bellsouth.net

www.altekaluminum.com

We have tried to make this catalog comprehensive and factual. We reserve the right to discontinue at any time, without notice, colors, materials, equipment and availability. Since some information may have been updated since the time of printing, we are not responsible for typographical or pictorial errors. Materials shown may vary slightly from actual colors. ©Digger Specialties 2019/02 99677