

*Poly***RAIL**[®]
Systems
BY DIGGER SPECIALTIES, INC.

VINYL RAILING



MADE
IN THE
USA 

PolyRAIL® Systems

BY DIGGER SPECIALTIES, INC.



Whether you want to make your home impressive, comfortable, traditional, or distinctive - PolyRail® Vinyl Railing is designed with you in mind. PolyRail® Vinyl Railing offers a comfortable feel with a traditional look and features a wide range of styles, colors, and applications to enhance your vision. Just imagine the possibilities; after all, your home is your masterpiece.

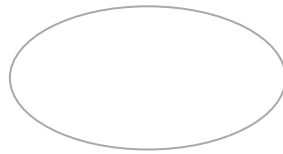
TABLE OF CONTENTS

Colors and Powder Coating	1
Cardinal Vinyl Railing	2-3
Falcon Vinyl Railing	4-5
Raven Vinyl Railing	6-7
T-Bird Vinyl Railing	8-9
Hidden Screw Rail Mounts	10
Gates & Hardware	11
Standard Vinyl Posts	12
Post Mounts	13
“A” Series Decorative Vinyl Posts	14
Column Clad Vinyl Post Wraps	15
“B” Series Aluminum Posts	16
Continuous Handrail	17

COLORS

VINYL COLORS

DSI Vinyl Products are available in three colors. Our Mocha color is available for **select** products. Please see individual product pages for availability.



White



Tan



Mocha

ALUMINUM COLORS

DSI Aluminum Products are offered in 12 standard AAMA 2604 colors. Custom colors and AAMA 2605 colors are available by special order.

Colors shown are a close representation of the true color. Please consult actual samples for accurate powder coating colors.



Satin Black



Black Fine Texture



Ninety Bronze



Bronze Fine Texture



Gloss Beige



Gloss White



White Fine Texture



Brown Fine Texture



Speckled Walnut



Sandy Shore



Chocolate



Silver

EXCLUSIVE DSI POWDER COATING PROCESS

DSI's aluminum Powder Coating offers an uncompromising quality created by state-of-the-art technology. Our system provides the highest quality powder coating on the market with a lifetime limited warranty giving you peace of mind in your investment.



1 The raw premium-grade aluminum is inspected to be free of blemishes and is not exposed to the outdoor elements.



2 The product enters a heated acidic cleaning stage to remove extrusion debris and fabrication oils.



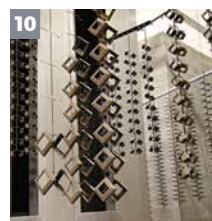
3-6 **Clean:** City water rinse
Cleaner: Recycling reverse osmosis water rinse
Cleanest: Pure reverse osmosis water rinse
Sealer: Dried-in-place aluminum sealer



7-8 A 200 MPH air blast removes water drops from the pre-treated aluminum.
A convection oven completes the dry-off process.



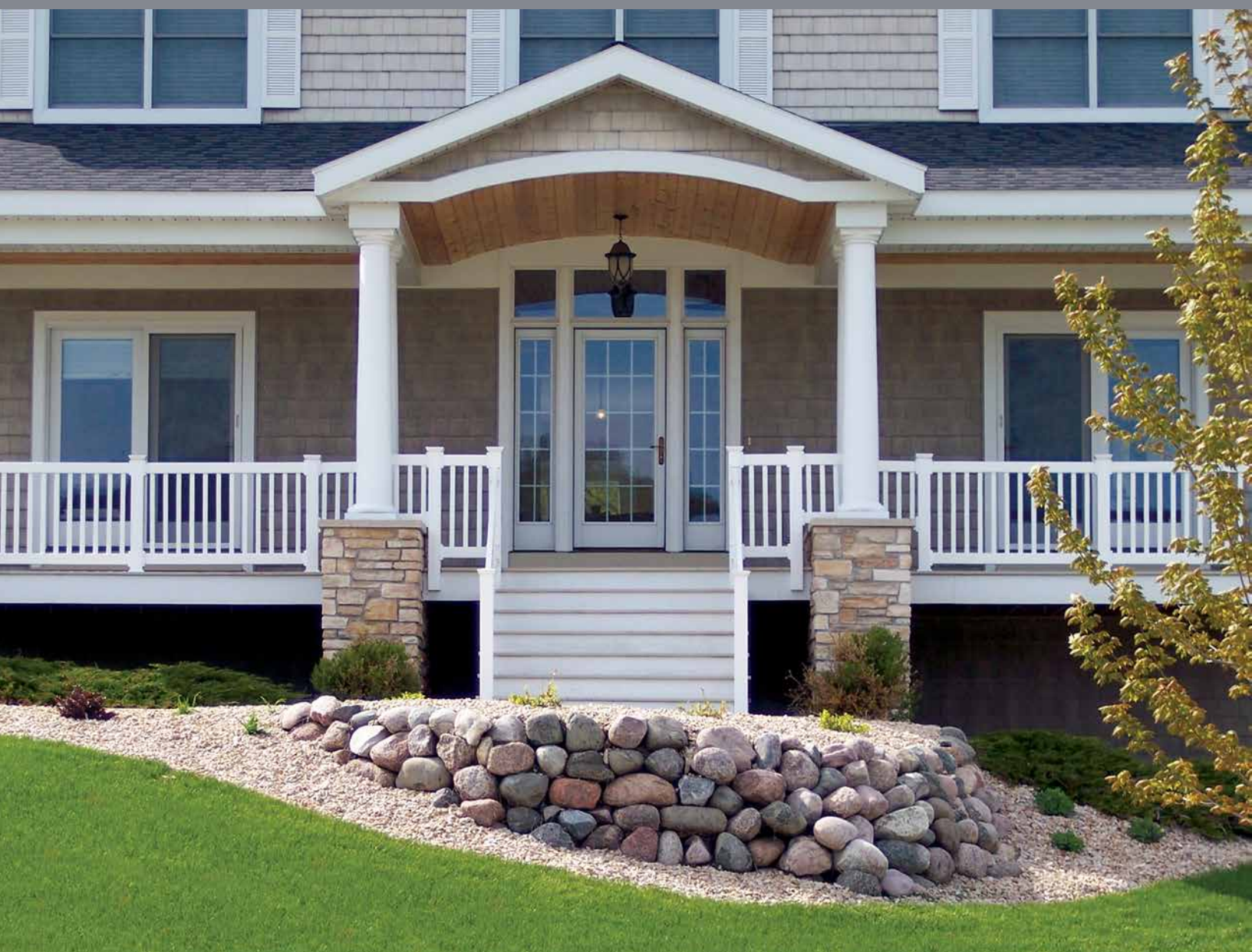
9 Powder is applied with 18 automated and 2 manual spray guns. Compressed process air is dried to -35°F Dew Point for superior adhesion.



10 The powder coating is then bonded and adhered to the aluminum substrate in a 400 degree cure stage.



CARDINAL VINYL RAILING



CARDINAL RAILING



STANDARD BALUSTER
 7/8" x 1-1/2" Rectangular Vinyl
 2-7/8" Baluster Spacing

White Tan



"A" SERIES BALUSTER
 7/8" x 1-1/2" Decorative Vinyl
 2-7/8" Baluster Spacing
 42" Balusters are Aluminum Reinforced

White Tan



"B" SERIES BALUSTER
 3/4" Round Aluminum
 3-7/8" Baluster Spacing
 See Page 1 for Baluster Colors

White Tan

Section Type	Length											Height		Baluster Style		
	4'	5'	6'	7'	8'	9'	10'	12'	14'	16'		36"	42"	Std	A	B
Straight	•	•	•	•	•	•	•					•	•	•	•	•
Stair	•	•	•	•	•	•	•					•	•	•	•	•
Crossover - Straight								•	•	•	•	•	•	•	•	•
Crossover - Stair					Not Available							Not Available		Not Available		
Single Chippendale - Straight	•	•	•	•	•	•	•					•	•	•		
Double Chippendale - Straight				•	•	•	•					•	•	•		
Chippendale - Stair					Not Available							Not Available		Not Available		



CROSSOVER



DOUBLE CHIPPENDALE

Note: Railing Support included with all 8' - 10' sections. 16' Crossover Sections include two Railing Supports.



FALCON VINYL RAILING



FALCON RAILING



STANDARD BALUSTER

1-3/8" x 1-3/8" Square Vinyl
3-1/2" Baluster Spacing

White

Tan

Mocha



"A" SERIES BALUSTER

1-3/8" x 1-3/8" Decorative Vinyl
3-1/2" Baluster Spacing
42" Balusters are Aluminum Reinforced

White

Tan



"B" SERIES BALUSTER

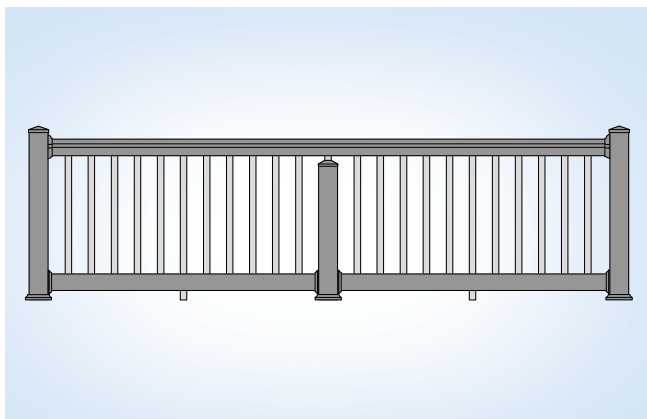
3/4" Round Aluminum
3-7/8" Baluster Spacing
See Page 1 for Baluster Colors

White

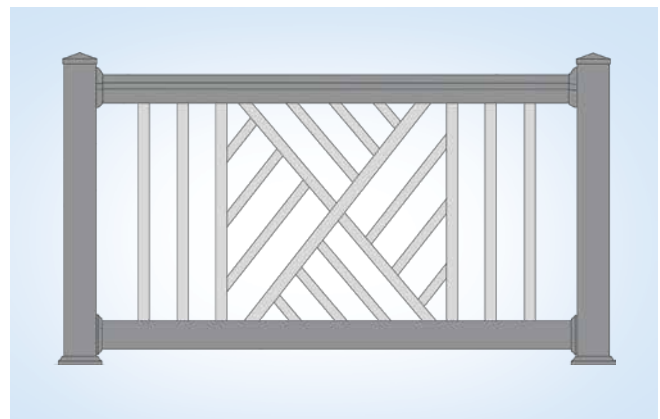
Tan

Mocha

Section Type	Length											Height		Baluster Style		
	4'	5'	6'	7'	8'	9'	10'	12'	14'	16'		36"	42"	Std	A	B
Straight	•	•	•	•	•	•	•					•	•	•	•	•
Stair	•	•	•	•	•	•	•					•	•	•	•	•
Crossover - Straight								•	•	•		•	•	•	•	•
Crossover - Stair					Not Available							Not Available		Not Available		
Single Chippendale - Straight	•	•	•	•	•	•	•					•	•	•		
Double Chippendale - Straight				•	•	•	•					•	•	•		
Chippendale - Stair					Not Available							Not Available		Not Available		



CROSSOVER



SINGLE CHIPPENDALE

Note: Railing Support included with all 8' - 10' sections. 16' Crossover Sections include two Railing Supports.



RAVEN VINYL RAILING



RAVEN RAILING



STANDARD BALUSTER
 7/8" x 1-1/2" Rectangular Vinyl
 2-7/8" Baluster Spacing

White Tan



"A" SERIES BALUSTER
 7/8" x 1-1/2" Decorative Vinyl
 2-7/8" Baluster Spacing
 42" Balusters are Aluminum Reinforced

White Tan



"B" SERIES BALUSTER
 3/4" Round Aluminum
 3-7/8" Baluster Spacing
 See Page 1 for Baluster Colors

White Tan

Section Type	Length											Height		Baluster Style		
	4'	5'	6'	7'	8'	9'	10'	12'	14'	16'		36"	42"	Std	A	B
Straight	•	•	•	•	•	•	•					•	•	•	•	•
Stair	•	•	•	•	•	•	•					•	•	•	•	•
Crossover - Straight								•	•	•	•	•	•	•	•	•
Crossover - Stair												Not Available				Not Available



CROSSOVER

Note: Railing Support included with all 7' - 10' sections. 14' and 16' Crossover Sections include two Railing Supports.



T-BIRD VINYL RAILING



T-BIRD RAILING



STANDARD BALUSTER

1-3/8" x 1-3/8" Square Vinyl
3-1/2" Baluster Spacing

White

Tan

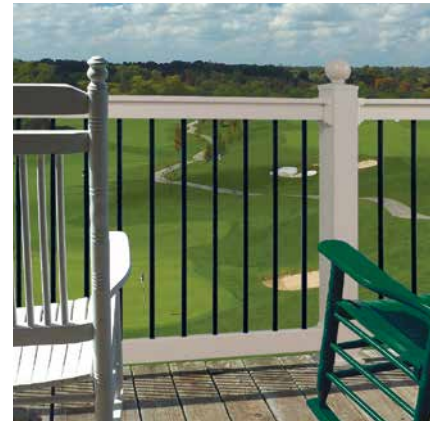


"A" SERIES BALUSTER

1-3/8" x 1-3/8" Decorative Vinyl
3-1/2" Baluster Spacing
42" Balusters are Aluminum Reinforced

White

Tan



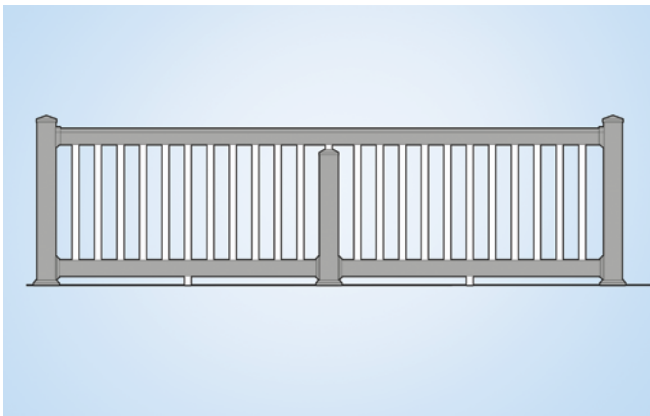
"B" SERIES BALUSTER

3/4" Round Aluminum
3-7/8" Baluster Spacing
See Page 1 for Baluster Colors

White

Tan

Section Type	Length											Height		Baluster Style		
	4'	5'	6'	7'	8'	9'	10'	12'	14'	16'		36"	42"	Std	A	B
Straight	•	•	•	•	•	•	•					•	•	•	•	•
Stair	•	•	•	•	•	•	•					•	•	•	•	•
Crossover - Straight								•	•	•	•	•	•	•	•	•
Crossover - Stair					Not Available							Not Available		Not Available		
Single Chippendale - Straight	•	•	•	•	•	•	•					•	•	•		
Double Chippendale - Straight				•	•	•	•					•	•	•		
Chippendale - Stair					Not Available							Not Available		Not Available		



CROSSOVER



DOUBLE CHIPPENDALE

Note: Railing Support included with all 8' - 10' sections. 16' Crossover Sections include two Railing Supports.

HIDDEN SCREW RAIL MOUNTS

STANDARD WALL MOUNTS:

1-4 pack is included inside each boxed railing section.

A 4 pack contains (2) top mounts, (2) bottom mounts, and screws.

CARDINAL



Top/Bottom Rail Mount

FALCON



Top Rail Mount



Bottom Rail Mount

RAVEN



Top Rail Mount



Bottom Rail Mount

T-BIRD



Top Rail Mount



Bottom Rail Mount

STANDARD STAIR MOUNTS:

1-4 pack is included inside each boxed stair railing section.

A 4 pack contains (2) top mounts, (2) bottom mounts, and screws.

For Stair Racking information visit polyrail.com



Top/Bottom Stair Mount



Top Stair Mount



Bottom Stair Mount



Top Stair Mount (factory pre-cut)



Bottom Stair/Angle Mount



Top Stair Mount



Bottom Stair Mount

OPTIONAL SPECIALTY MOUNTS:

These mounts are not included with boxed sections.

A 4 pack contains (2) top mounts, (2) bottom mounts, and screws.



Top/Bottom Angle Mount



Top/Bottom Angle Mount



Top Stair/Angle Mount (uncut)



Bottom Stair/Angle Mount



Top/Bottom Angle Mount



Top 45° Mount



Top 45° Mount (factory pre-cut)

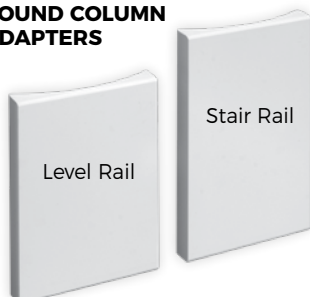


Bottom 45° Mount (factory pre-cut)



Bottom 45° Mount

8" AND 10" ROUND COLUMN ADAPTERS



Not Available in 6"

RAIL SUPPORTS



Standard Vinyl

"B" Series Aluminum

GATES & HARDWARE

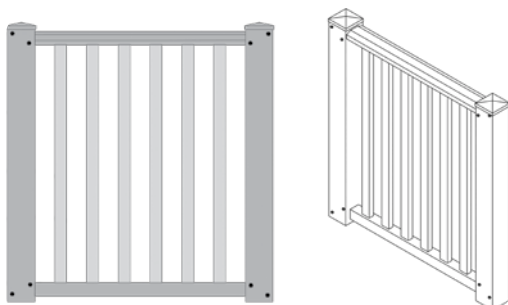
CARDINAL GATE



FALCON GATE



RAVEN GATE



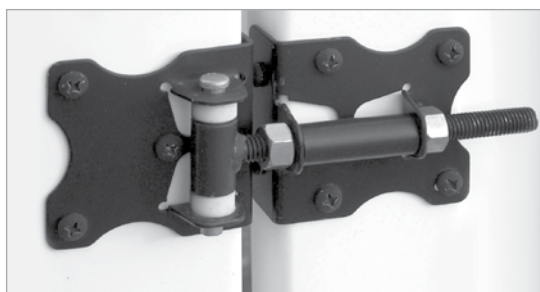
T-BIRD GATE



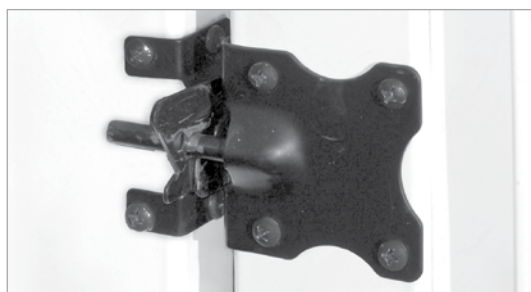
Matching gates available for each style of railing • Aluminum Reinforced Frame
Available in 36"W and 48"W openings • Special Width Gates Available Upon Request

Baluster Style	Gate Size (width x height)			
	36" x 36"	48" x 36"	36" x 42"	48" x 42"
Standard Baluster	•	•	•	•
"A" Series Baluster	•	•	•	•
"B" Series Baluster	•	•	•	•

RESIDENTIAL HINGE



RESIDENTIAL LATCH



White

Tan

Mocha

Black

Mocha is available for **select** products.
Please see individual product pages for availability.

STANDARD VINYL POSTS

VINYL POSTS

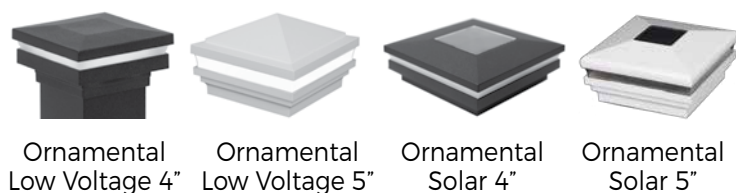


VINYL POST CAPS

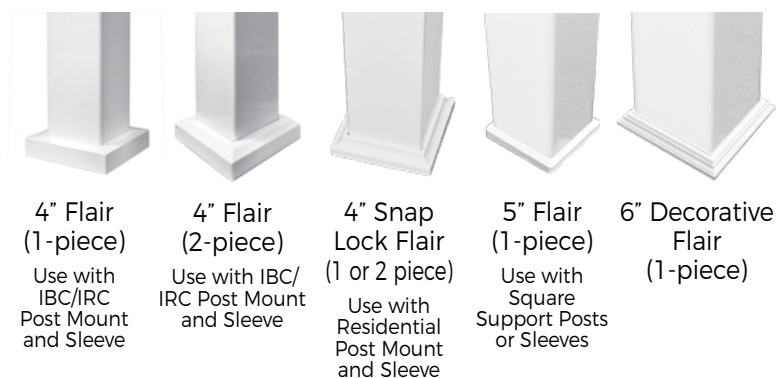


MAGENA STAR

Magenta Star Ornamental Low Voltage and Solar Lights. Visit magenastar.com for more information and to see additional styles.



VINYL POST FLAIRS



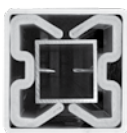
VINYL POSTS SPECIFICATIONS

	4" Post Sleeve	5" Post Sleeve	5" Support Post	6" Post Sleeve
Heights	38", 44", 48", 54" 8', 9', 10'	38", 44", 48", 54" 8', 9', 10'	8', 9', 10'	38", 44", 48", 54" 10'
Load Capacity	Non-Load Bearing w/o Wood Post	Non-Load Bearing w/o Wood Post	8' = 12,000 lb.	Non-Load Bearing w/o Wood Post

POST MOUNTS

4" RESIDENTIAL ADJUSTABLE ALUMINUM POST MOUNTS

Requires 4" (.160" Wall) Post Sleeve.



Top View

Powder coated base plates resist corrosion and ACQ wood treatment.

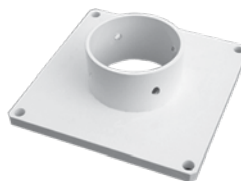


Angle Adjustment Leveling Bolts

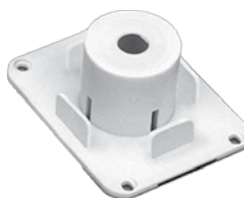


Heavy-Duty Standard

TOP AND BOTTOM POST MOUNTS



5" Top & Bottom Hurricane Mount Set (Included with all 5" Square Support Posts)



Optional 4" Top and Bottom Post Mount Plates



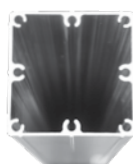
4" IBC AND IRC POST MOUNTS

IBC (HEAVY DUTY) POST MOUNTS:

- IBC Approved
- 3.62" Tube
- .060" Wall
- ½" x 5½" square plate with 8 fasteners
- Shims and leveling bolts included



Top View



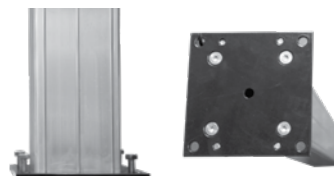
43" IBC Post Mount
Available in 37", 43", 47" & 53" lengths



37" IRC Post Mount
Available in 37", 43", 47" & 53" lengths

IRC (STANDARD) POST MOUNTS:

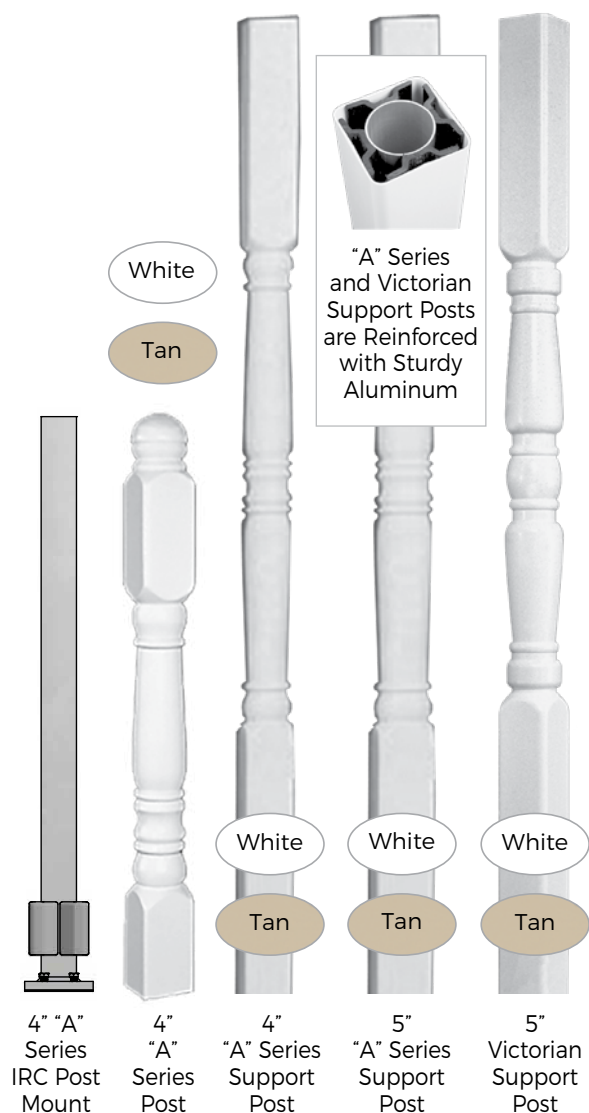
- IRC Approved
- 3.62" Tube
- .060" Wall
- ¼" x 5½" square plate with 4 fasteners
- Shims and leveling bolts included



Requires 4" (.135" Wall) Post Sleeve
Note: 5" and 6" Post Mounts available.
Contact Customer Service for information.

"A" SERIES DECORATIVE VINYL POSTS

POSTS



CAP



"A" Series Decorative Post Caps are Easily Attached with Vinyl Adhesive

Cap is Included with Post

FLAIRS



4" Flair
(1-piece)

Use with
IBC/IRC Post
Mount



4" Flair
(2-piece)

Use with
IBC/IRC Post
Mount



4" Snap
Lock Flair
(1 or 2 piece)

Use with
Residential Post
Mount



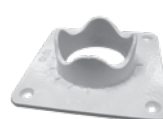
5" Decorative
Flair

Use with
Decorative
Support Posts

SUPPORT POST MOUNTS



4" Top & Bottom
Post Mount Plates
(Included with
all 4" "A" Series
Support Posts)



5" Top & Bottom
Post Mount Plate Set
(Included with all
5" Decorative Support
Posts)



Optional 5" Top &
Bottom Hurricane
Mount Sets are
Tested for High
Wind Loads for 5"
"A" Series Post

SPECIFICATIONS

	4" "A" Series Post	4" "A" Series Support Post	5" "A" Series Support Post	5" Victorian Support Post
Heights	38", 44", 48", 52"	9'	9', 10'	9'
Load Capacity	Non-Load Bearing w/o Aluminum Post Mount	3,900 lb.	9' = 7,520 lb.	9' = 7,520 lb.

COLUMN CLAD VINYL POST WRAPS

STYLES

The Wood Post Supplies Load Capacity



Ratchets to
Lock Together



Wraps Around
the Wood Post –
No Screws Needed



White
Tan

Smooth



White
Tan

Fluted
(Special Order)

CAP



Column Clad Cap
4", 6"

FLAIR



Column Clad Flair (4-piece)
4", 6", 8"

SPECIFICATIONS

	4" Smooth Column Clad	6" Smooth Column Clad	4" Fluted Column Clad	6" Fluted Column Clad	8" Fluted Column Clad
Heights	8'6", 10'	8'6", 10'	8'6", 10' (Special Order)	8'6", 10' (Special Order)	10' (Special Order)
Load Capacity	Non-Load Bearing w/o Wood Post	Non-Load Bearing w/o Wood Post	Non-Load Bearing w/o Wood Post	Non-Load Bearing w/o Wood Post	Non-Load Bearing w/o Wood Post

"B" SERIES ALUMINUM POSTS

See Page 1 for Color Options

POSTS



4" Post Sleeve
(.065" wall)



4" Post w/Plate
(.090" wall)



6" Post w/Plate
(.090" wall)

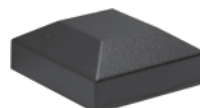


4" Support Post
(.090" wall)



6" Support Post
(.090" wall)

CAPS

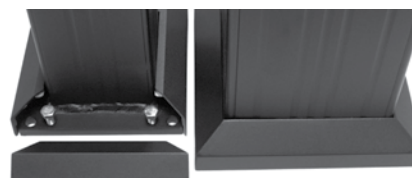


Flat Cap
4" & 6"



Ball Cap
4"

FLAIRS



Post Flair (2-piece)
4" & 6"

TIE DOWN BRACKET



Tie Down Bracket
with Cover
(Set of 2)

Installation
Instructions
Require 2 Sets
per Support Post

SPECIFICATIONS

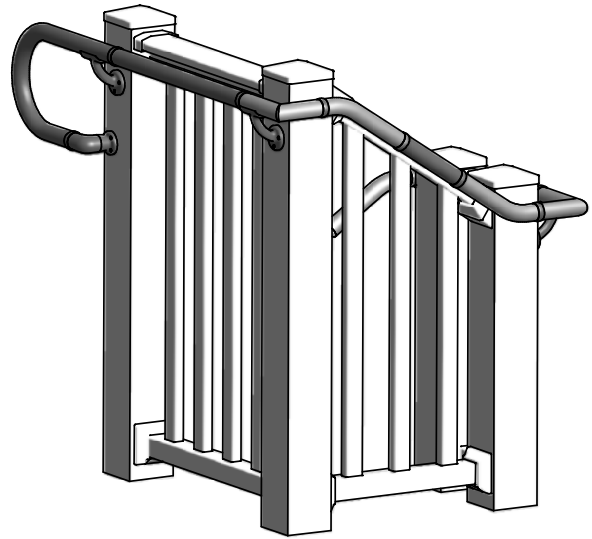
	4" "B" Series Post Sleeve	4" "B" Series Post w/Plate	6" "B" Series Post w/Plate	4" "B" Series Support Post	6" "B" Series Support Post
Heights	38", 44", 48", 54"	38", 44", 48", 54"	38", 44", 48", 54"	8', 9', 10'	8', 9', 10'
Actual ASD Load Bearing Capacity	Non-Load Bearing w/o Wood Post	Non-Load Bearing	Non-Load Bearing	8' = 13,531 lb. 9' = 12,751 lb. 10' = 11,970 lb.	8' = 16,543 lb. 9' = 16,543 lb. 10' = 16,543 lb.

CHR

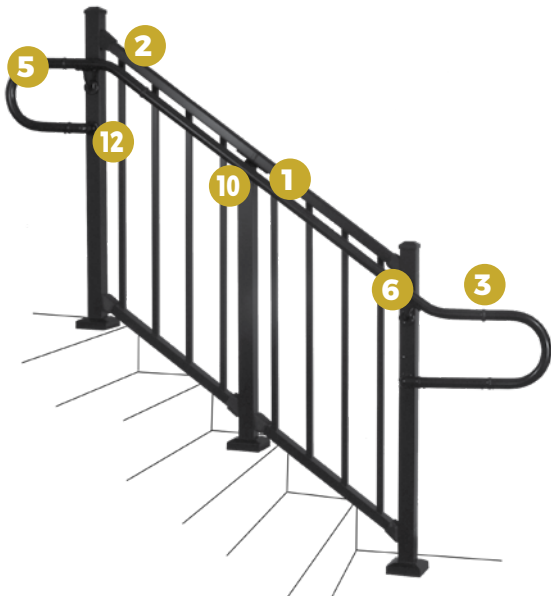
Continuous Handrail ALUMINUM

ADA COMPLIANT HANDRAIL

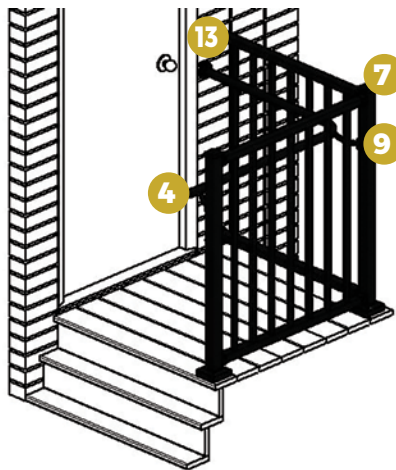
A variety of rail lengths and accessories complete this system.
Available in 8', 10', & 16' Rail Lengths.
Available in all the colors shown on page 1.



STAIR APPLICATION



DECK APPLICATION



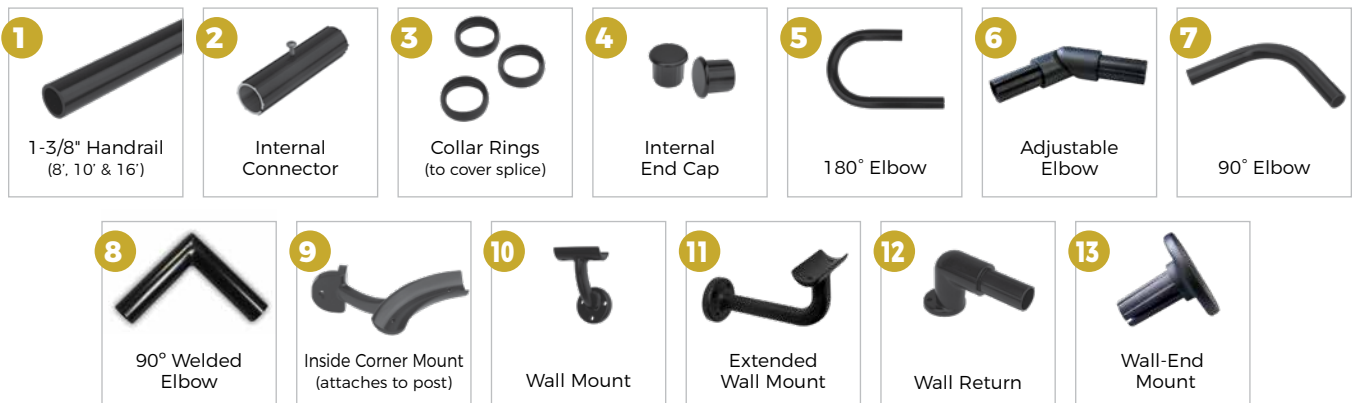
Inside Corner Mount
& 90° Elbow Detail



Extended Wall Mount Detail



90° Welded Elbow Detail



DSI FAMILY OF PRODUCTS



polyrail.com



ALTEK ALUMINUM, LLC

WHOLESALE
ALUMINUM PRODUCTS

211 Omohundro Place • Nashville, TN 37210

(615) 242-9123

altekcarports@bellsouth.net

www.altekaluminum.com

We have tried to make this catalog comprehensive and factual. We reserve the right to discontinue at any time, without notice, colors, materials, equipment and availability. Since some information may have been updated since the time of printing, we are not responsible for typographical or pictorial errors. Materials shown may vary slightly from actual colors. ©Digger Specialties 2019/02 99694